

LB Lambeth's Kerbside Strategy



Tash Hartke

Kerbside Strategy
Programme Manager

18th June 2024

A bit about Lambeth

Lambeth

- Inner London borough
- Low car ownership
- High active travel / public transport use
- 26.83km²
- Population: 328,244
- Diverse / young population



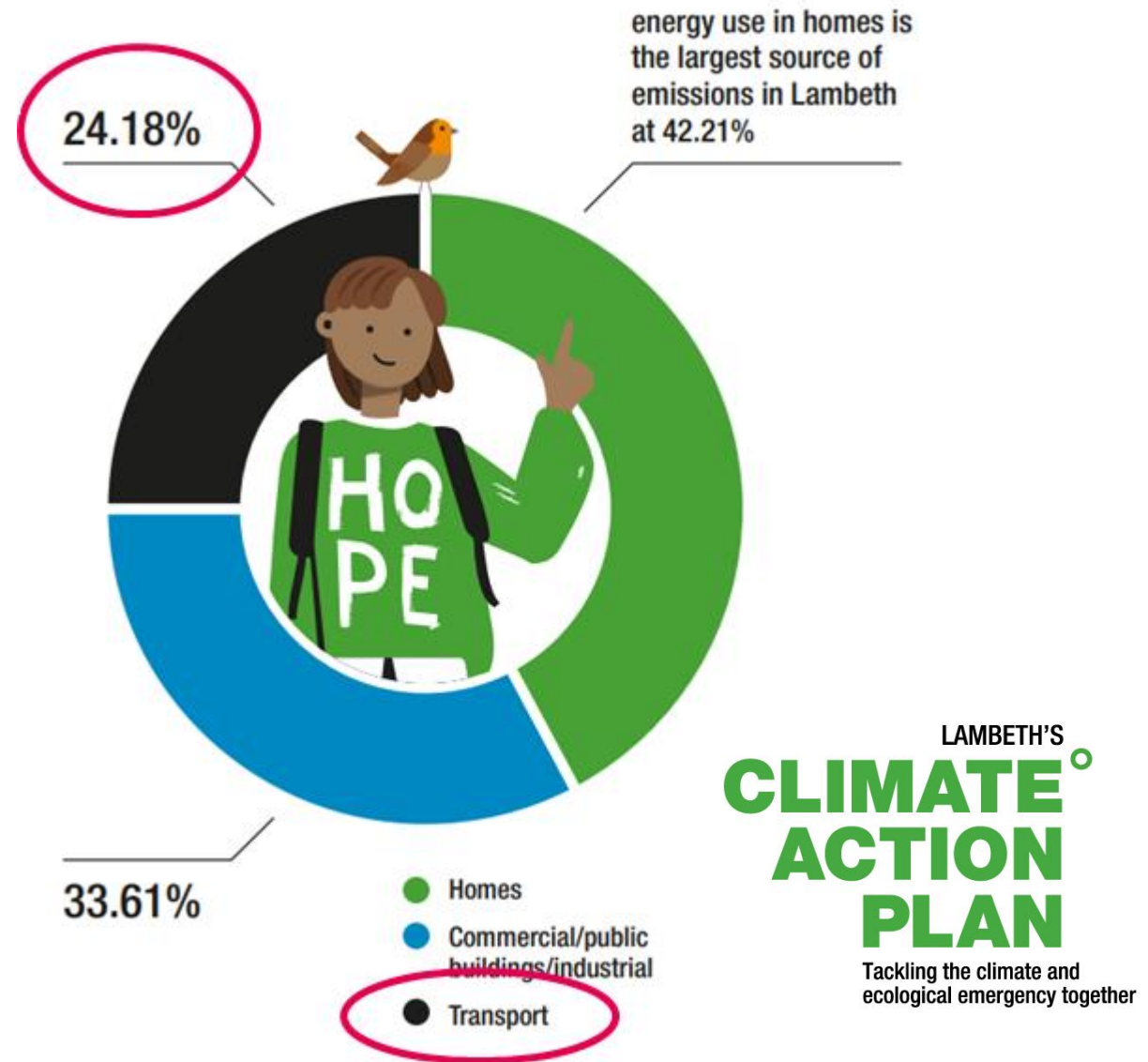
Kerbside Strategy Origin

Climate Action Plan

- Net Zero 2030
- Transport emissions 24%
- Need 27% traffic reduction

Kerbside Strategy

- Parking policy → tool for change
- Make it easier to walk, cycle and wheel



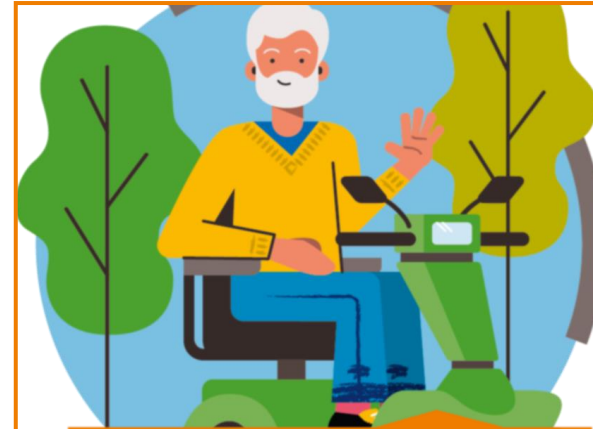
Kerbside Strategy Overview

Aims

- **25%** sustainable kerbside by 2030
- 4 priorities
- “Kerbside basics”

Context

- 60% Lambeth households don't own a car
- 94% Kerbside used to manage parking



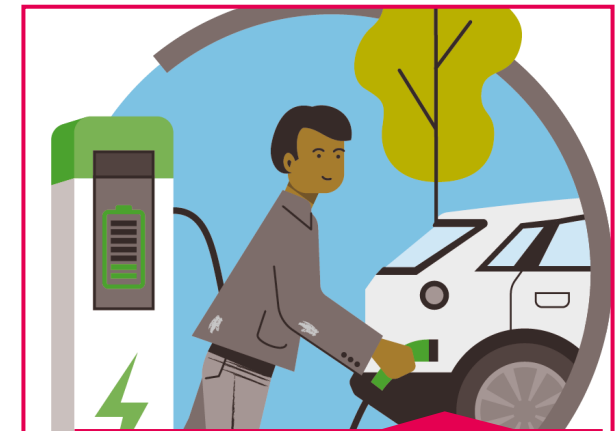
Enable Accessible
and Active Travel



Create Places for
People



Increase Climate
Resilience

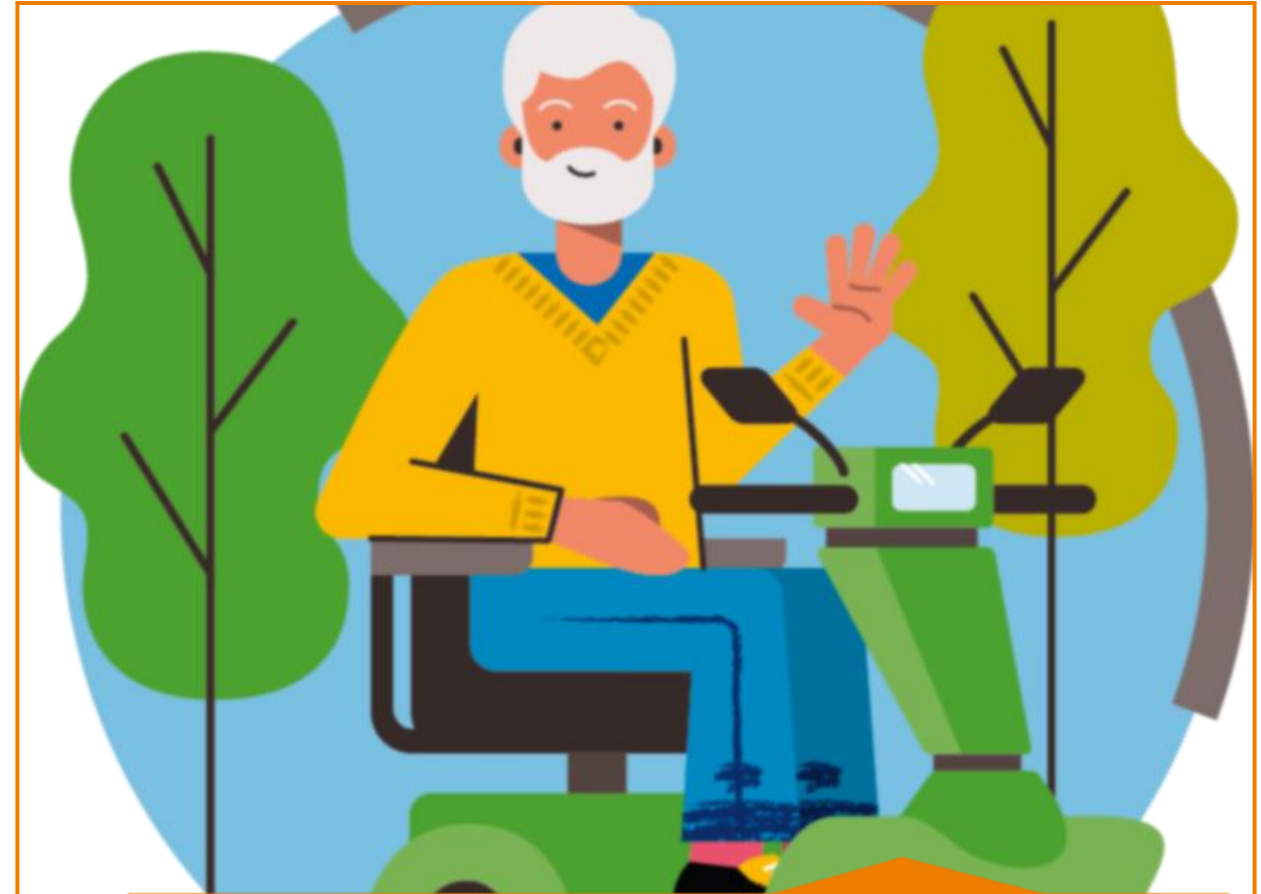


Reduce Traffic and
Transport Emissions

1: Enable Accessible and Active travel

Kerbside basics

- 2m wide pavements
- Secure cycle parking every 100m on every street
- Free cycle parking every 50m on every street



Enable Accessible
and Active Travel

2: Create Places For People

Kerbside basics

- All residents have the opportunity to apply for a parklet on their street
- Community parklet grants support the creation of outdoor, green and social spaces



Create Places for
People

3: Increase Climate Resilience

Kerbside basics:

- A tree every 25m on every Lambeth street enabled by the kerbside
- Permeable surfaces including depaving, greening, wildflowers and sustainable drainage make up 10% of Lambeth kerbside



4: Reduce Traffic and Transport Emissions

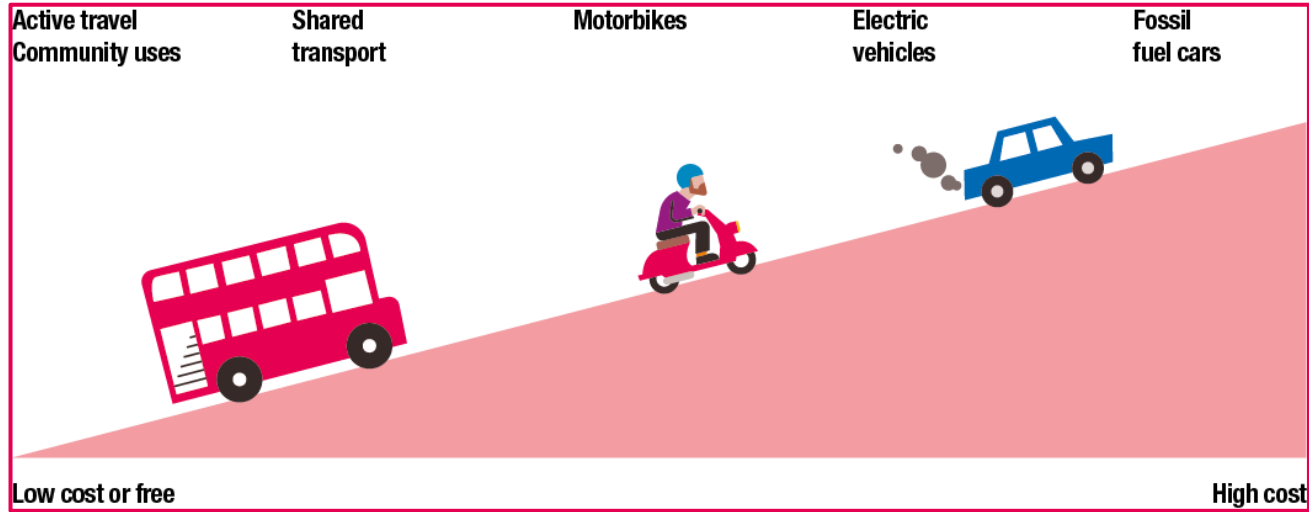
Kerbside basics

- Full electric car club vehicles on every street in Lambeth
- All local high streets have a shared cargo bike hire service
- All local high streets have access to a shared electric van



Reduce Traffic and
Transport Emissions

Kerbside Innovation: Pricing Principles



If your vehicle...

- produces more **greenhouse gases**,
- produces more **exhaust or non-exhaust pollutants**,
- **takes up more space** and increases congestion

... you should **pay more**



Kerbside Monitoring

% of Lambeth Kerbside

46%
Parking



24%
Double yellow lines

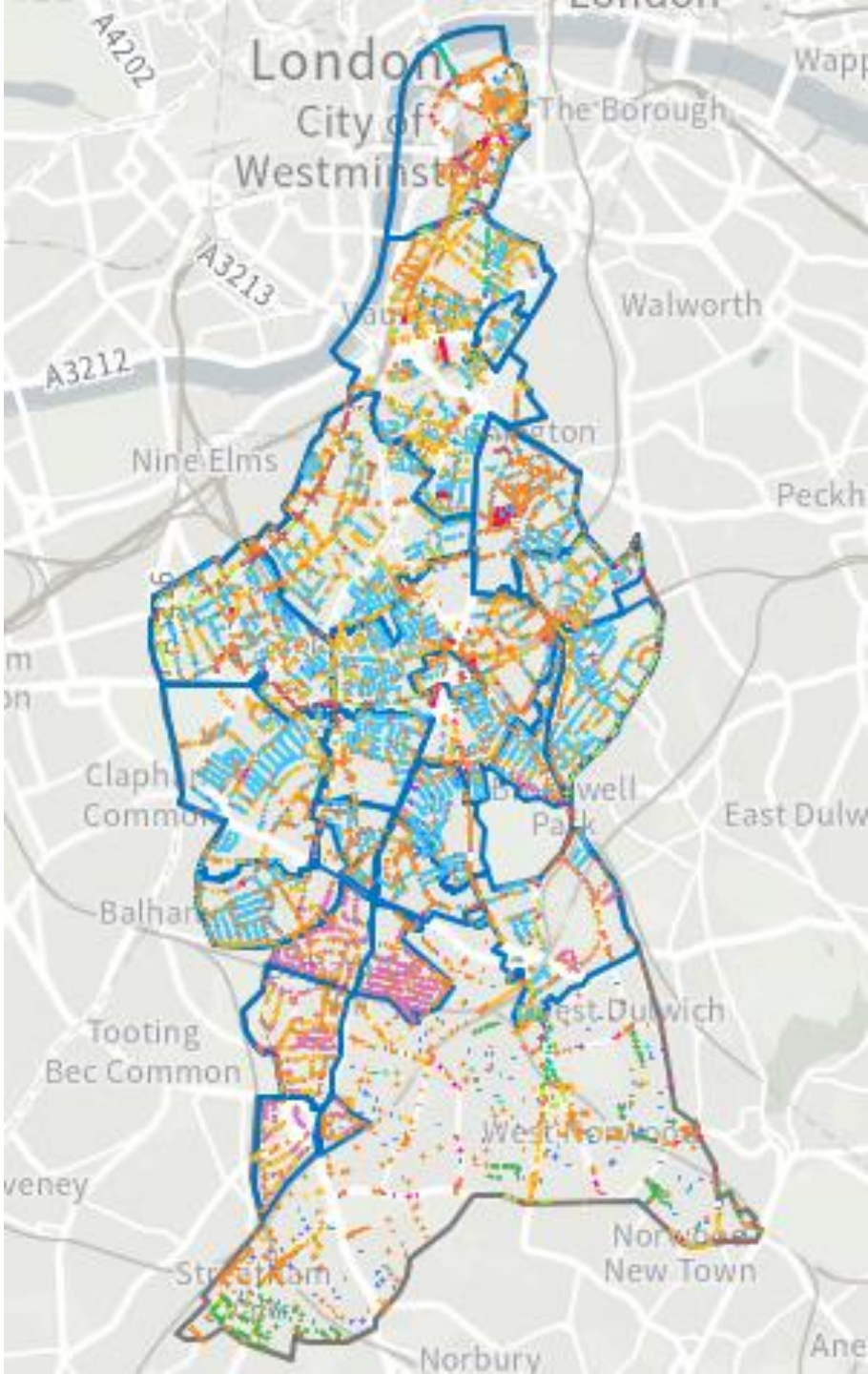
15%
Single yellow lines

9%
Driveways

ONLY 6%

Sustainable uses of the kerbside:

- SuDs, street trees
- Community and business parklets
- Cycle lanes
- Pedestrian Crossings
- Bus lanes and bus stops
- Shared Scooter / Bike Bay
- Car Club Bay
- EV Bay
- School Keep Clear
- Taxi Bay
- Cycle Hangars
- Loading & disabled bays



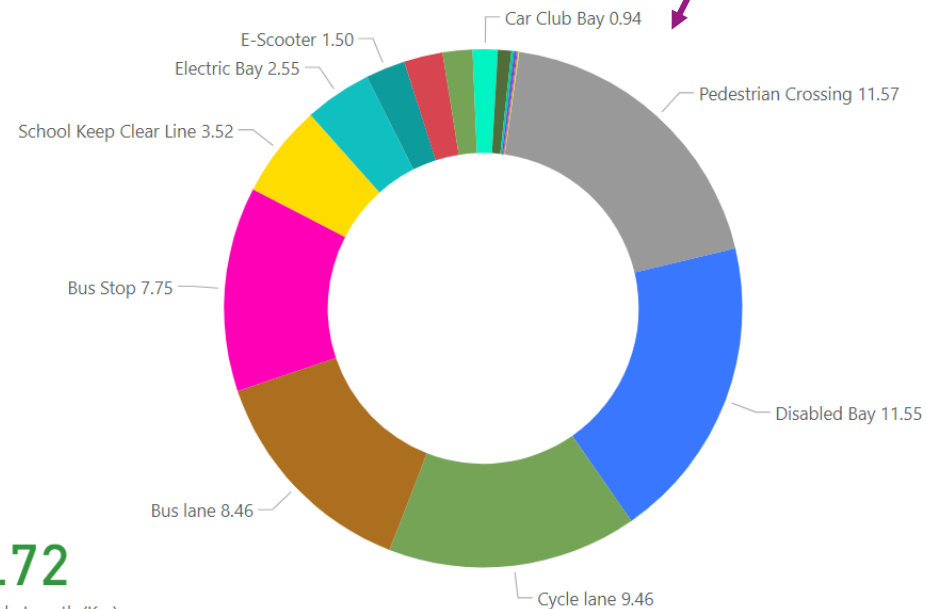
Kerbside Monitoring

Digitised traffic orders

Dashboard

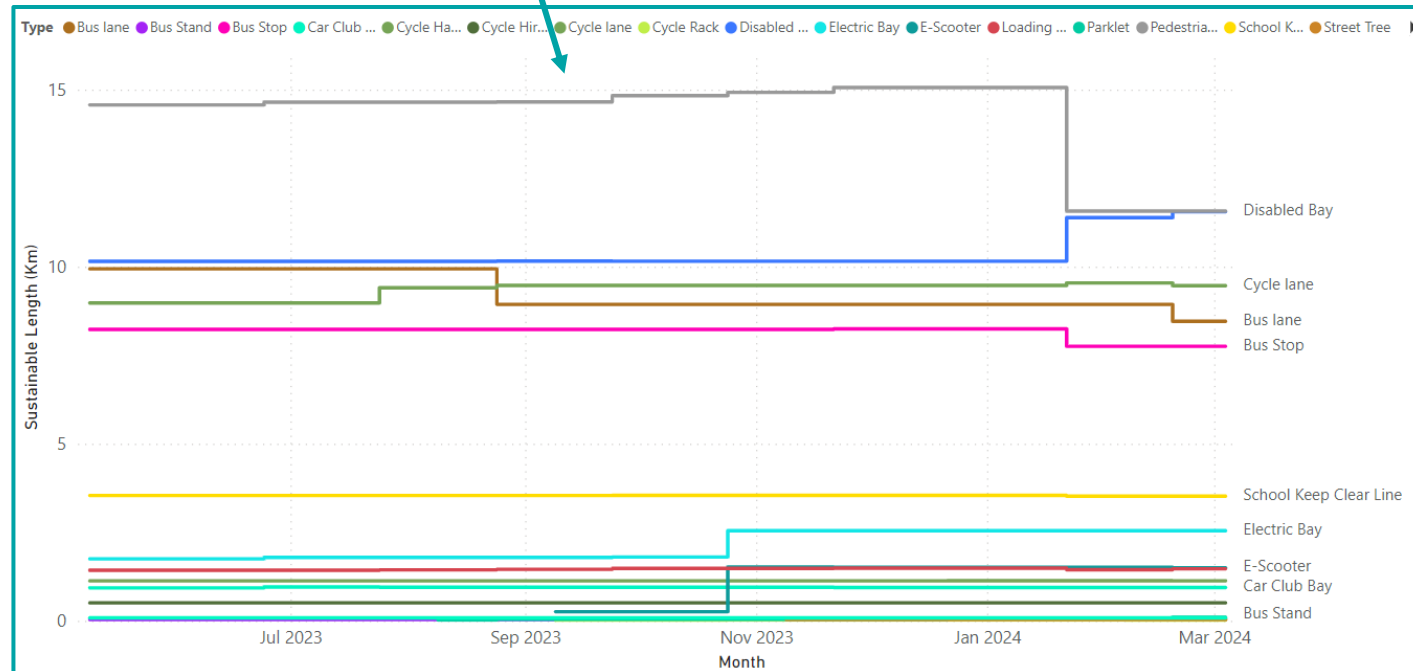
Kerbside uses over time

Progress towards 25% sustainable kerbside



60.72

Total Sustainable Length (Km)



Our first year of delivery

Year 1 summary

- 9km of new sustainable kerbside
- Delivery by teams across the council (trees, sustainability, parking etc.)
- Tooling up for 14km per year



Traffic filters + SuDs



Cycle tracks



Cycle hangars



Thank you

Tash Hartke

thartke@lambeth.gov.uk

